

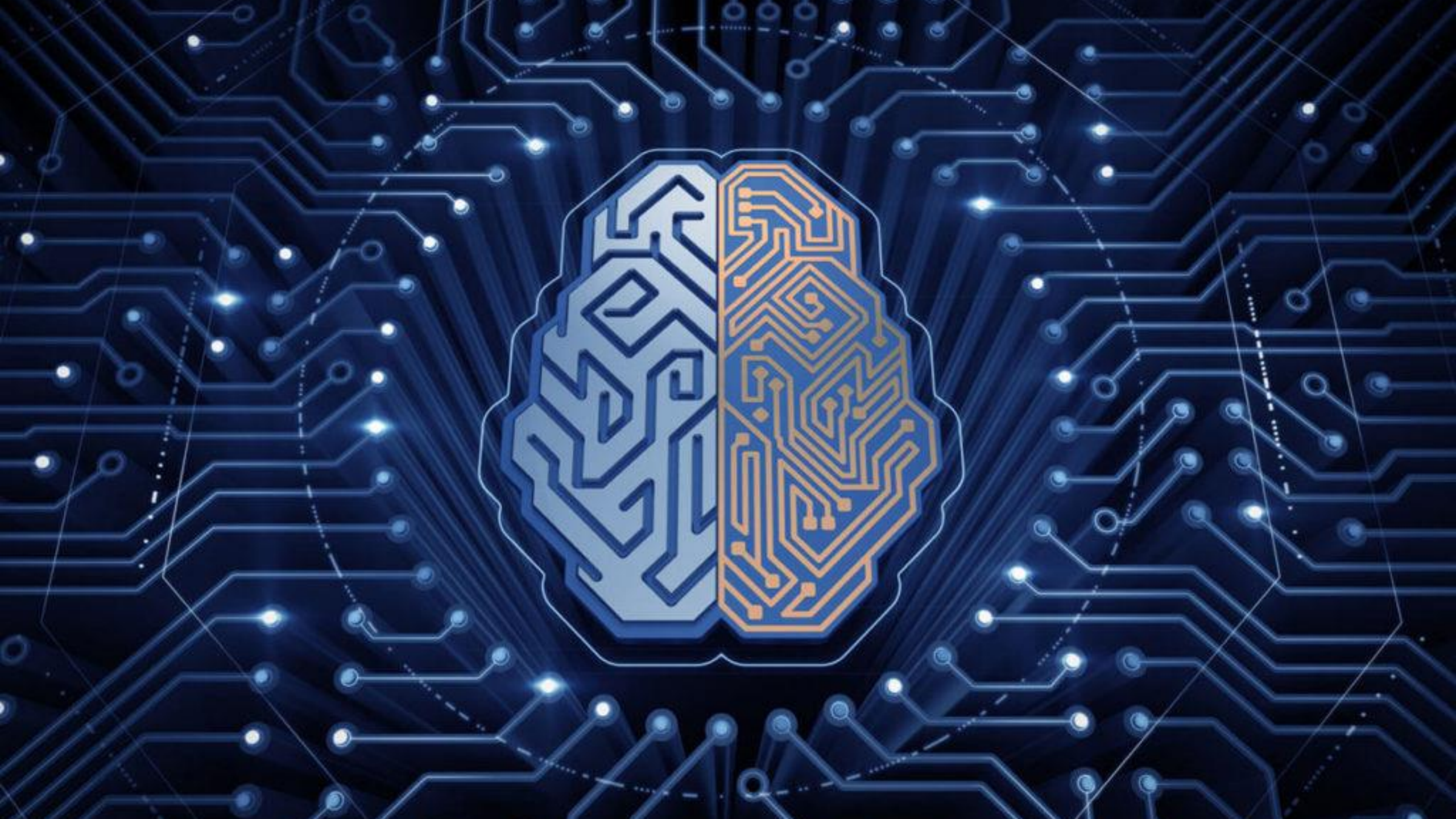
@ananyachdh

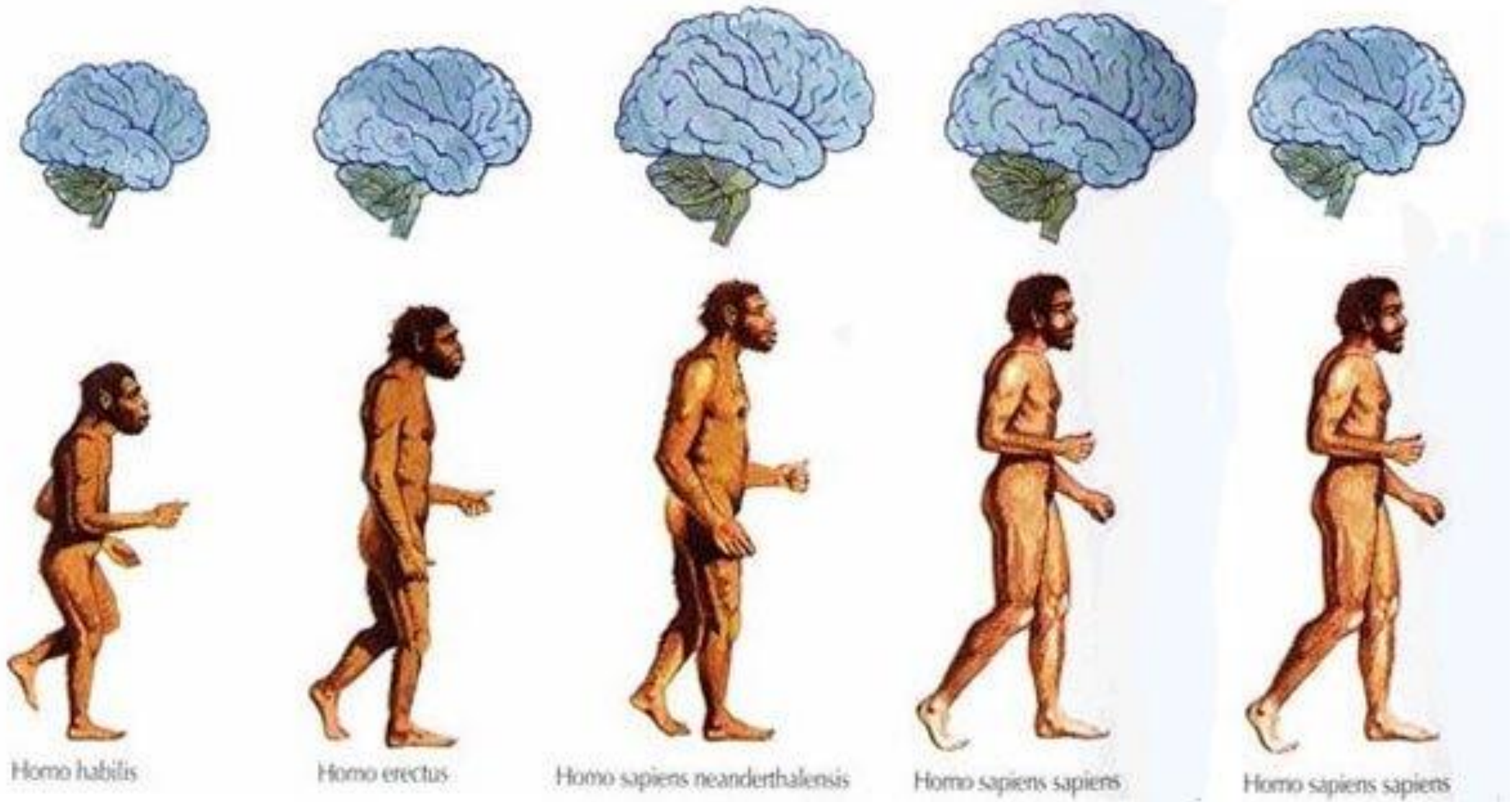
Brain Computer Interfaces











2 million years

The image features a central graphic of a human brain, rendered in a dark blue color. Overlaid on the brain is a heatmap with a color gradient ranging from dark blue to light yellow, indicating areas of varying intensity or activity. The brain is positioned in the center of the frame. The background is a dark blue gradient, overlaid with a network of white nodes and lines, resembling a neural network or a data visualization. The text "brain.evolve()" is written in a white, sans-serif font across the middle of the brain graphic.

brain.evolve()

Brain Computer Interfaces



BRAIN CHIPS

TELEPATHIC RATS



5

Rewriting Life

Rats Communicate Through Brain Chips


Researchers show that animals can collaborate via a brain-to-brain interface.

by Susan Young Rojahn February 28, 2013



Article | [OPEN](#) | Published: 11 May 2016

Word pair classification during imagined speech using direct brain recordings

Stephanie Martin, Peter Brunner, Iñaki Iturrate, José del R. Millán, Gerwin Schalk, Robert T. Knight & Brian N. Pasley 

Scientific Reports **6**, Article number: 25803 (2016) | [Download Citation](#) ↓



Download Knowledge + Skills



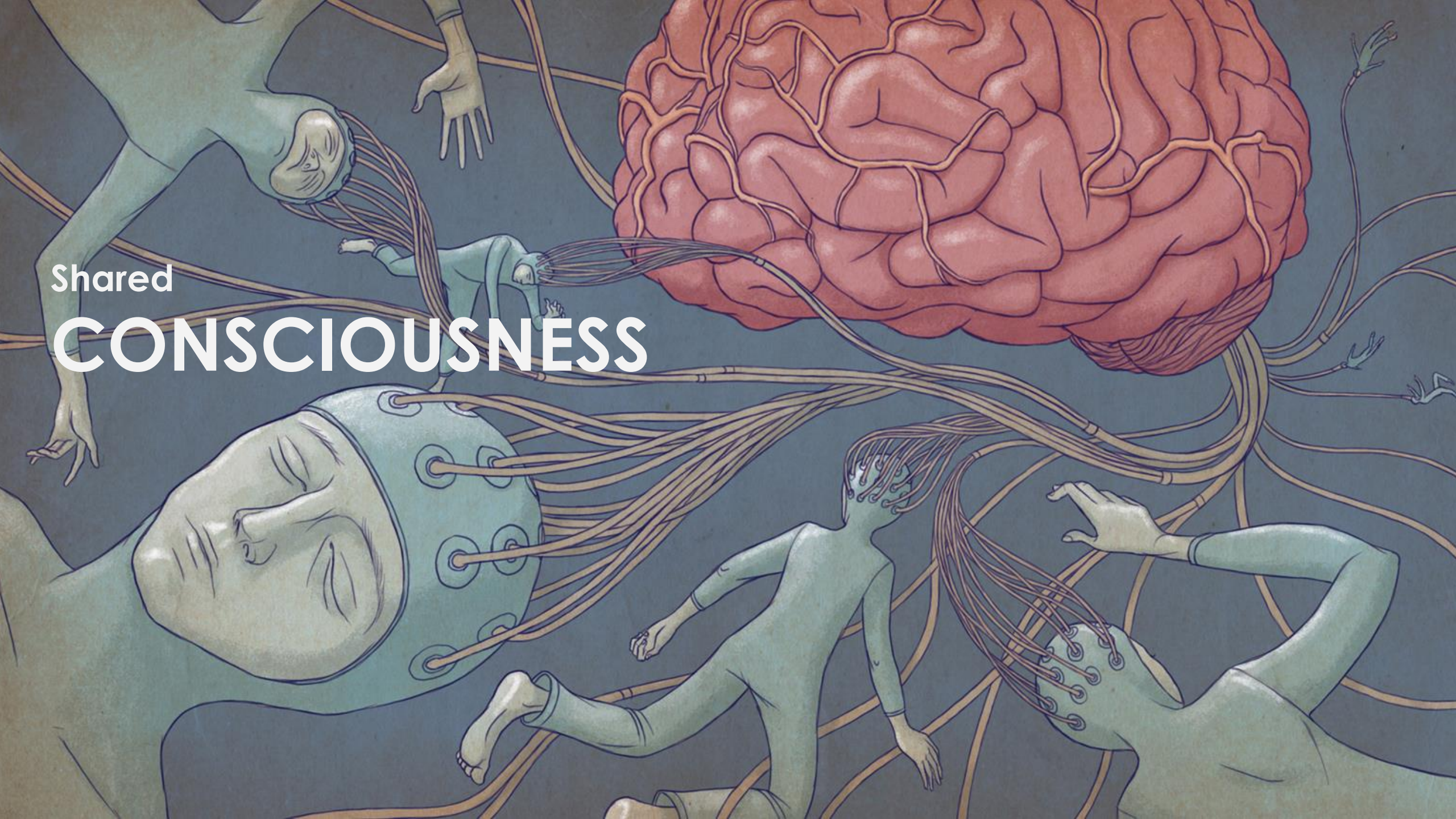
Brain to Brain Communication

The image features a central, semi-transparent blue silhouette of a human head in profile, facing right. Inside the head, a complex network of colorful spheres (red, orange, yellow, blue, green, black) is connected by thin black lines, resembling a molecular structure or a neural network. The background is a vibrant, multi-colored digital space with blue and purple hues. It is filled with various data visualizations: vertical columns of numbers (0-9) in different colors, glowing green and blue fiber-optic-like lines, and a grid of light points. The overall aesthetic is high-tech and futuristic, representing the intersection of human cognition and digital technology.

**Connect your MIND
to the INTERNET**

Shared

CONSCIOUSNESS





nature

International weekly journal of science

[Home](#) | [News & Comment](#) | [Research](#) | [Careers & Jobs](#) | [Current Issue](#) | [Archive](#) | [Audio & Video](#) | [For Authors](#)

[News & Comment](#) > [News](#) > [2018](#) > [August](#) > [Article](#)

NATURE | NEWS



Brain implants allow paralysed monkeys to walk

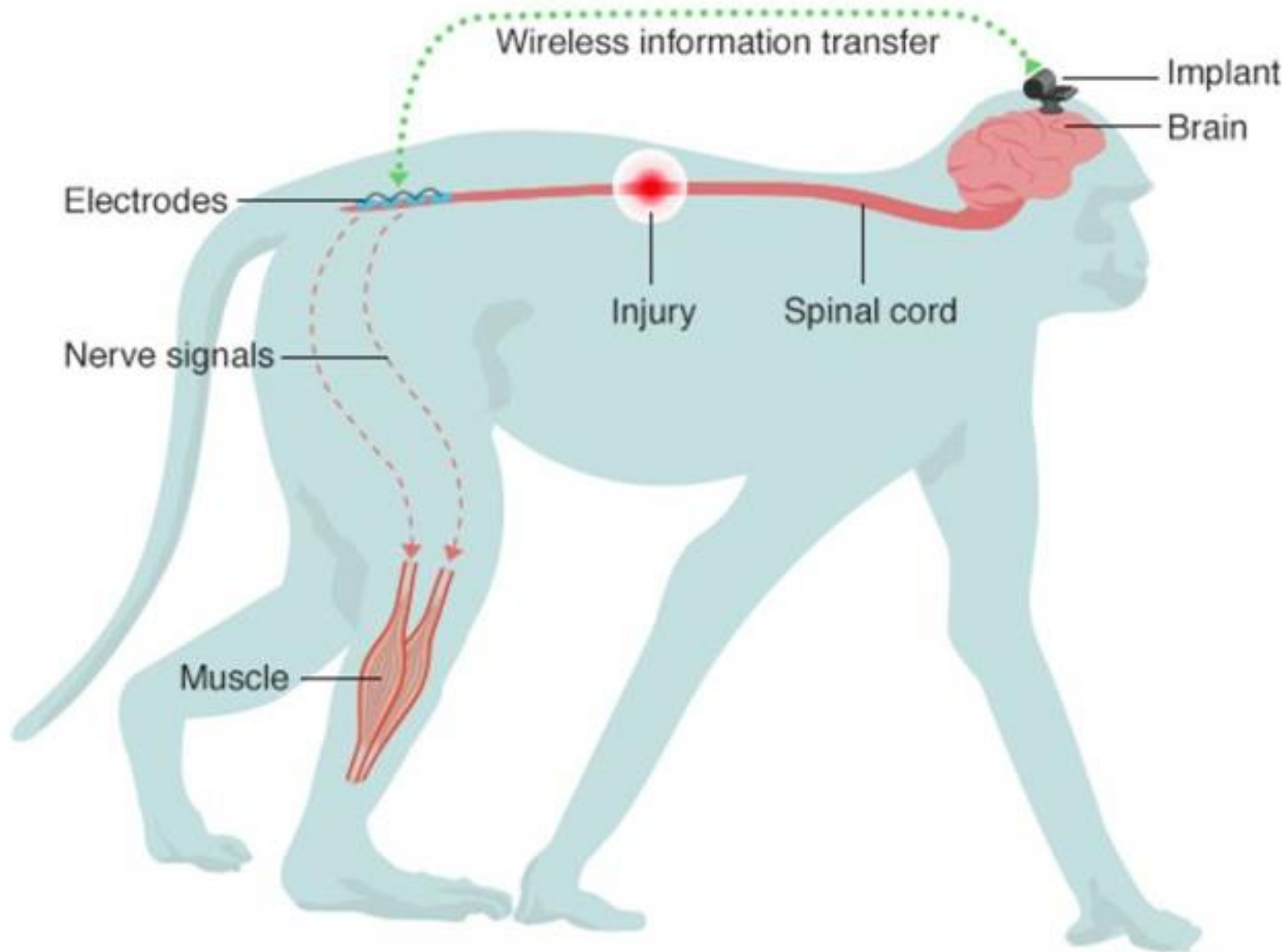
Swiss researchers travel to China to conduct pioneering experiment.

David Cyranoski

09 November 2016



Wha



The US Military is Testing Mood Altering, AI-Controlled Brain Implants in Humans

READ DREAMS

Using EEGs & fMRI



A futuristic, dark, spire-like structure stands on a rocky, cratered planet surface. The structure has several tall, thin spires and a base of rectangular blocks. The sky is dark with many stars, a large planet on the right, and a moon on the left. The text "VR in your head" is centered in white.

VR in your head

EXPERIENCE ANOTHER PERSON'S
LIFE



Eliminating

ISOLATION

and allowing for true

EMPATHY





Redefining the
HUMAN EXPERIENCE







facebook

kernel





CBC

MENU ▾

news

Top Stories

Local

The National

Opinion

World

Canada

Politics

Technology & Science

Artificial intelligence, human brain to merge in 2030s, says futurist Kurzweil



Ray Kurzweil, Google's director of engineering, says we're close to linking our brains with AI

[Solomon Israel](#) · CBC News · Posted: Jun 05, 2015 5:00 PM ET | Last Updated: June 9, 2015





IBM

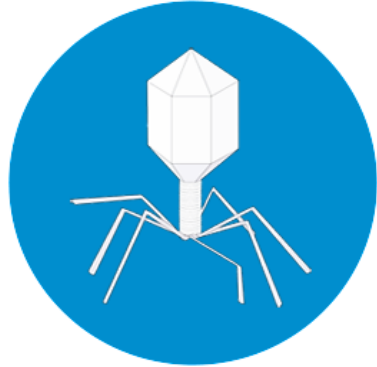




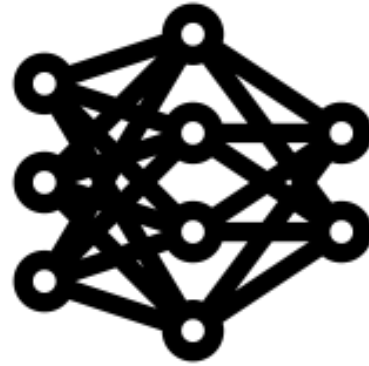
Exponential Technologies



Genetics



Phage
Therapy



Machine
Learning



Fusion



Human
Longevity



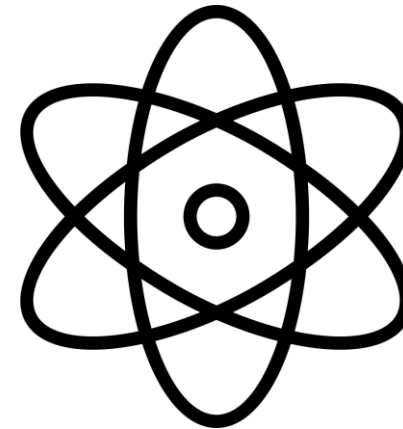
Space



Virtual Reality



BCIs



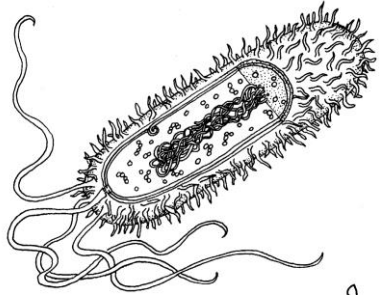
Quantum

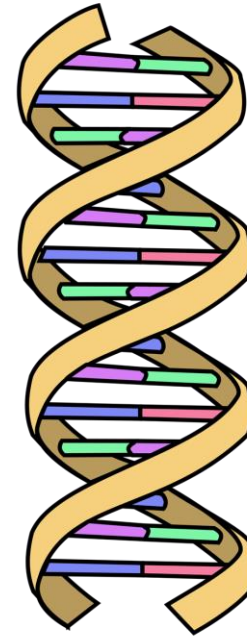
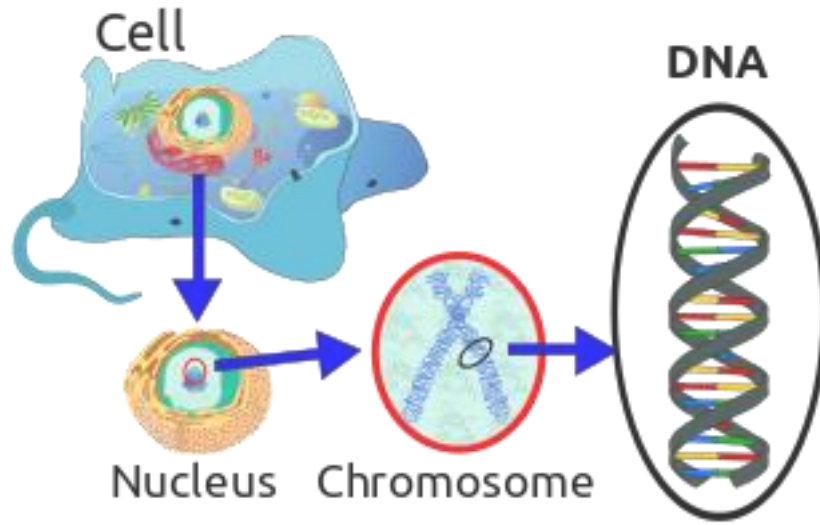


Nanotech



GENOMICS





DNA

-  = Adenine
-  = Thymine
-  = Cytosine
-  = Guanine
-  = Phosphate backbone



AGGAAAGAGGA
TCCTTTCTCCT



AGGAAAGAGGA
TCCTTTCTCCT



GGGGAAGAGGAGCAA
CCCCTTCTCCTCCTT

The background features a dark blue field with several faint, light-colored illustrations. On the left, a hand in a white lab coat sleeve holds a pipette, with a single drop of liquid falling. On the right, a large DNA double helix is shown in shades of red and brown. In the center, there are two hexagonal icons: the top one contains a brain, and the bottom one contains an eye. The text 'GENE-EDITING' is centered in a bold, white, sans-serif font.

GENE-EDITING

GOD MODE



AGGAAAGAGGA
TCCTTTCTCCT

GGGGAAGAGGAGCAA
CCCCTTCTCCTCCTT

A microscopic view of cells, possibly cancer cells, rendered in a teal color. The cells are irregular in shape and have many fine, hair-like projections extending from their surfaces. A dark teal horizontal banner is centered across the image, containing the text "CURE DISEASES" in white, bold, uppercase letters.

CURE DISEASES

A vibrant assortment of fresh fruits and vegetables, including corn, bell peppers, grapes, tomatoes, and strawberries, arranged in a dense, colorful composition. The items are fresh and glistening, set against a dark background.

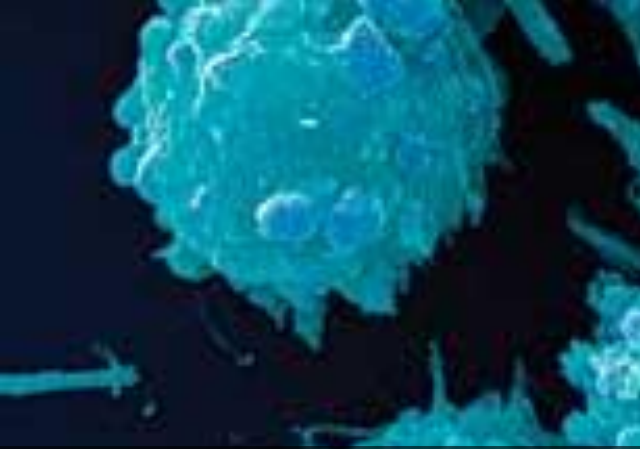
MAKE SUPER FOODS



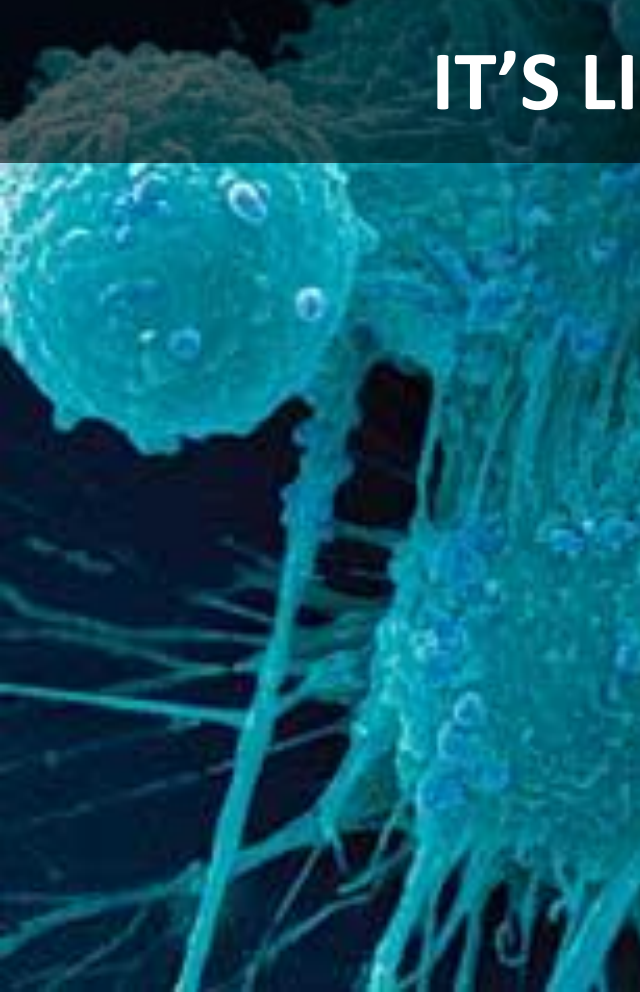
STOP MALARIA



DESIGNER BABIES

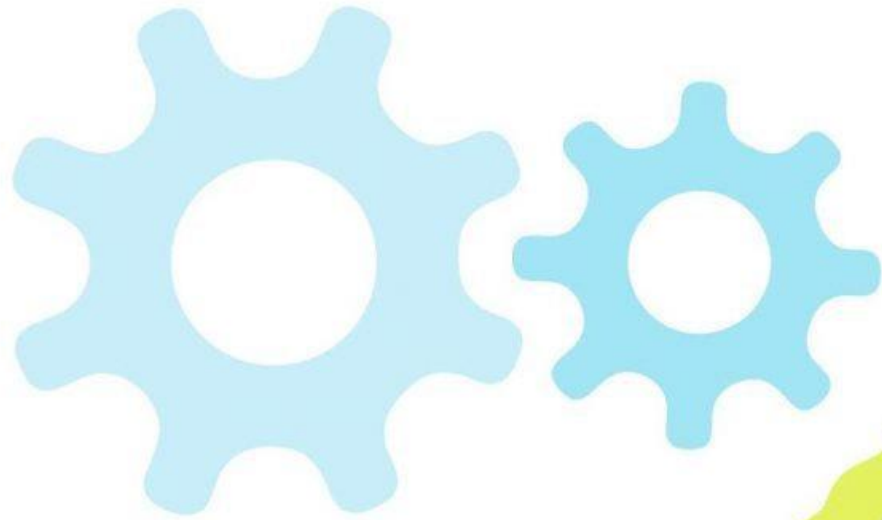


IT'S LIKE CODING...BUT FOR THE LIVING THINGS!



CRISPR

Clustered Regularly Interspaced
Short Palindromic Repeats

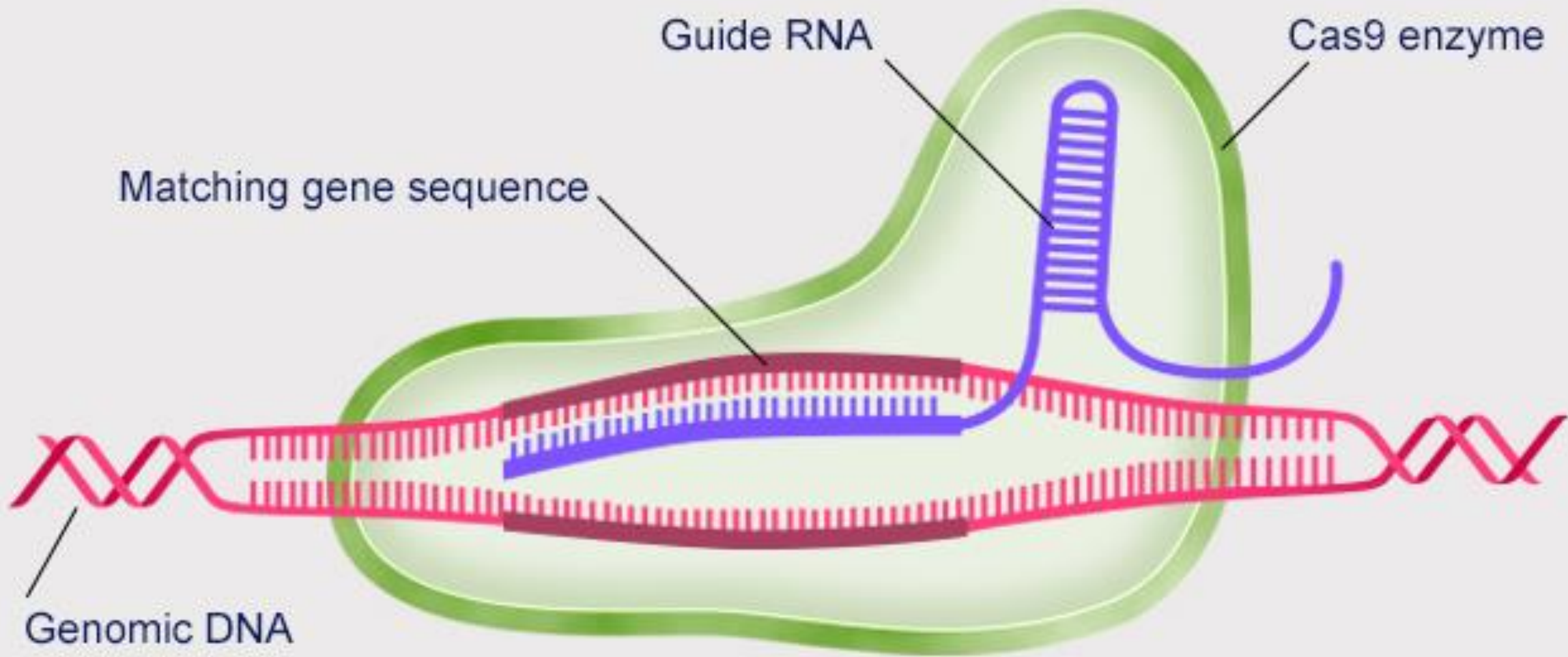


Guide RNA

Cas9 enzyme

Matching gene sequence

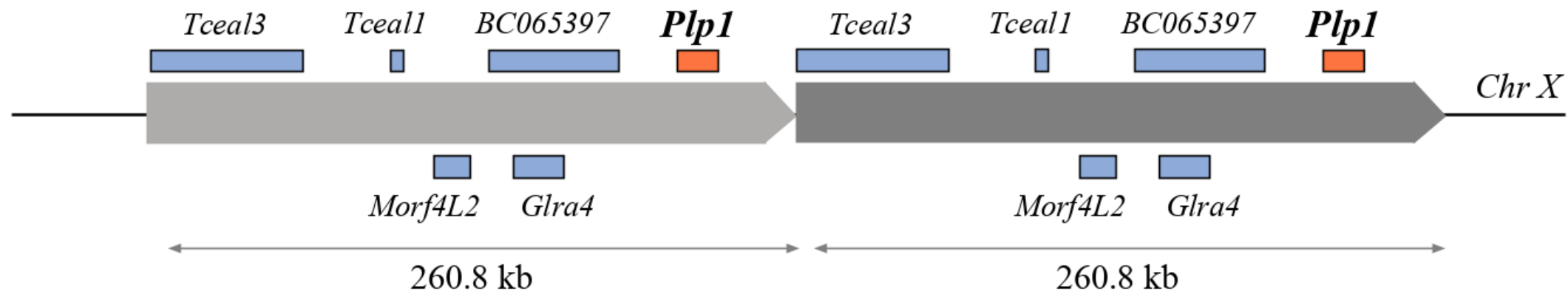
Genomic DNA

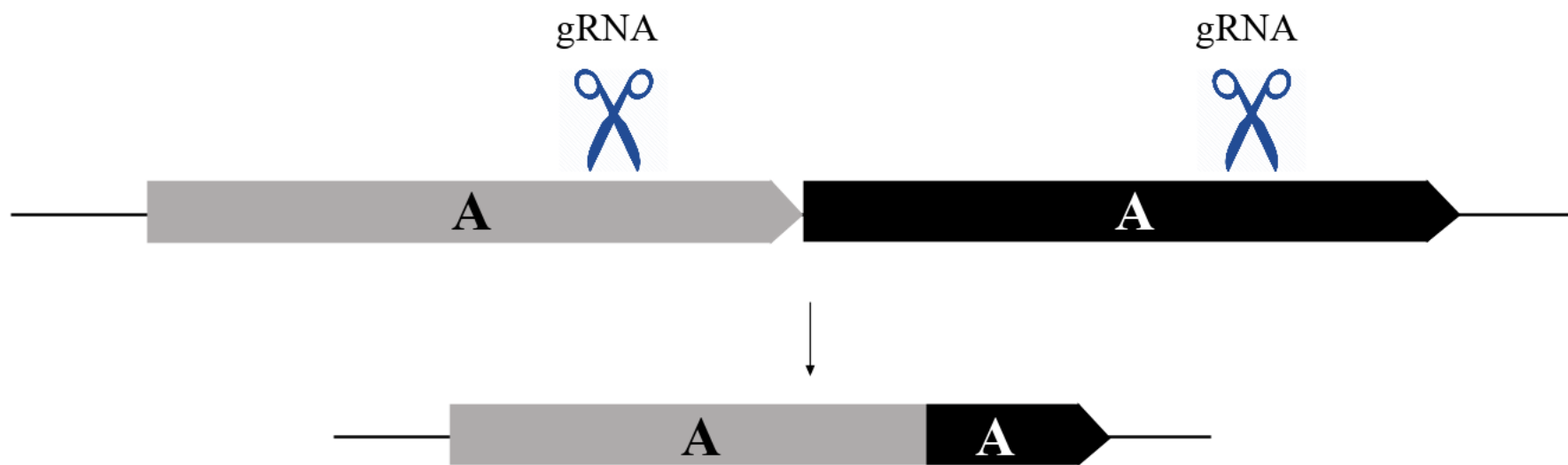
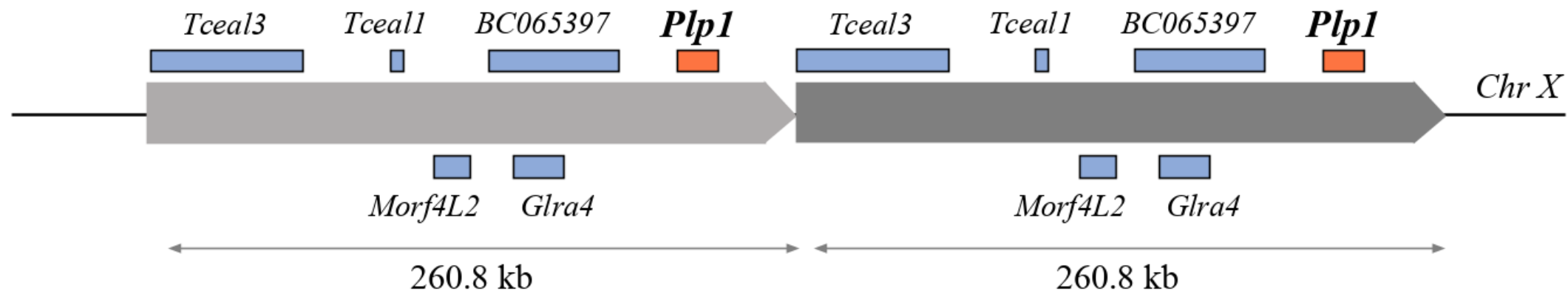


Pelizaeus-Merzbacher Disease

- X-linked leukodystrophy
- Incidence of about 1:100,000 boys
- Main disease hallmark is dysmyelination
- Severe motor and cognitive impairment
- No treatment option available



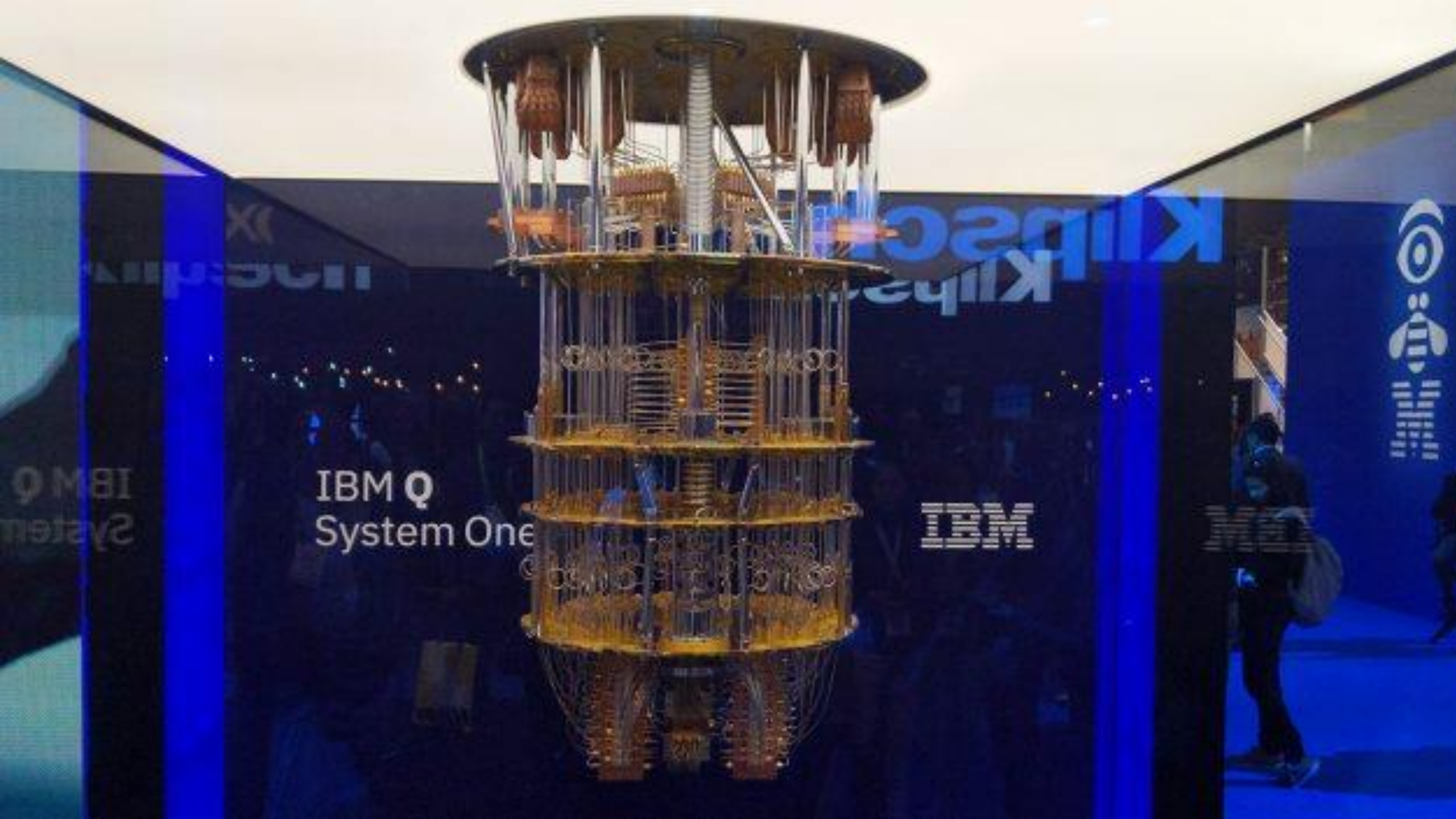






A complex quantum computing device, likely a superconducting qubit system, is shown against a black background. The device is composed of numerous gold-colored wires and components, including a central cylindrical structure and several rectangular plates. The wires are densely packed and connected to various parts of the device, creating a highly intricate and delicate structure. The lighting highlights the metallic sheen of the gold components.

QUANTUM COMPUTING



IBM Q
System One

IBM



Bit
(Classical Computing)

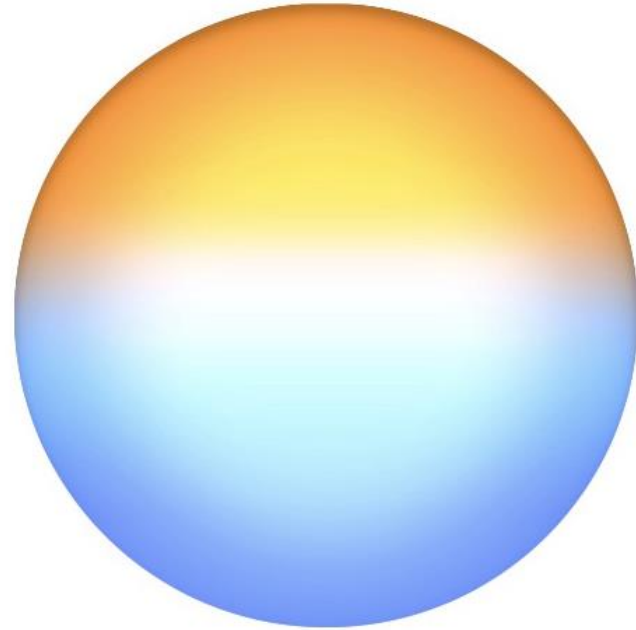
0



1

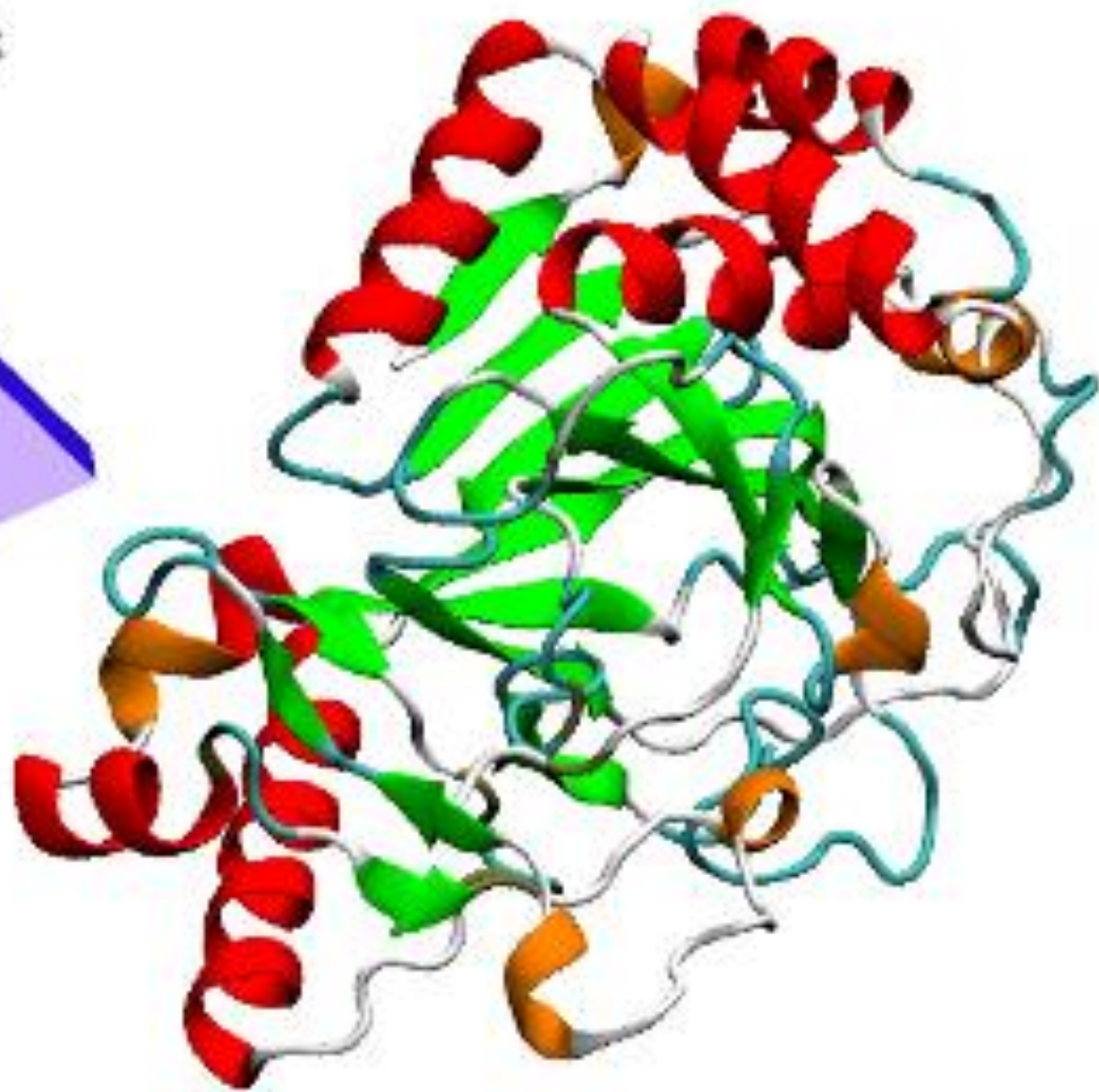
Qubit
(Quantum Computing)

0



1

LSIEDFTQAFGMTPAAFSALPRWKQONLKKEKGLF







GOOGLE

SCIENCE

TECH

Google confirms 'quantum supremacy' breakthrough

Its research paper is now available to read in its entirety

By [Jon Porter](#) | [@JonPorty](#) | Oct 23, 2019, 6:31am EDT



So far,
82 Rocket
Launches
Into Orbit
in just 2019







Mutated gene doubles life span of fruit flies

By Deseret News | Dec 15, 2000, 9:45am MST

 HUMAN LONGEVITY, INC.™

[About](#)▼

Human Longevity, Inc. Completes \$220 Million Series B Financing

42,685 views | Dec 3, 2018, 07:40am

Plunging Prices Mean Building New Renewable Energy Is Cheaper Than Running Existing Coal

An aerial photograph of a vast solar farm in China. The image shows a dense grid of solar panels covering a large area. A prominent feature is a large, circular structure in the center, which appears to be a reservoir or a large-scale water management system. To the right, there is a complex of several buildings, including a large, multi-story structure, likely serving as a control center or administrative building. The surrounding landscape is a mix of green fields and brown, arid-looking soil, suggesting a semi-arid environment. The overall scene depicts a large-scale industrial and agricultural project.

B B C

How China's giant solar farms are transforming world energy



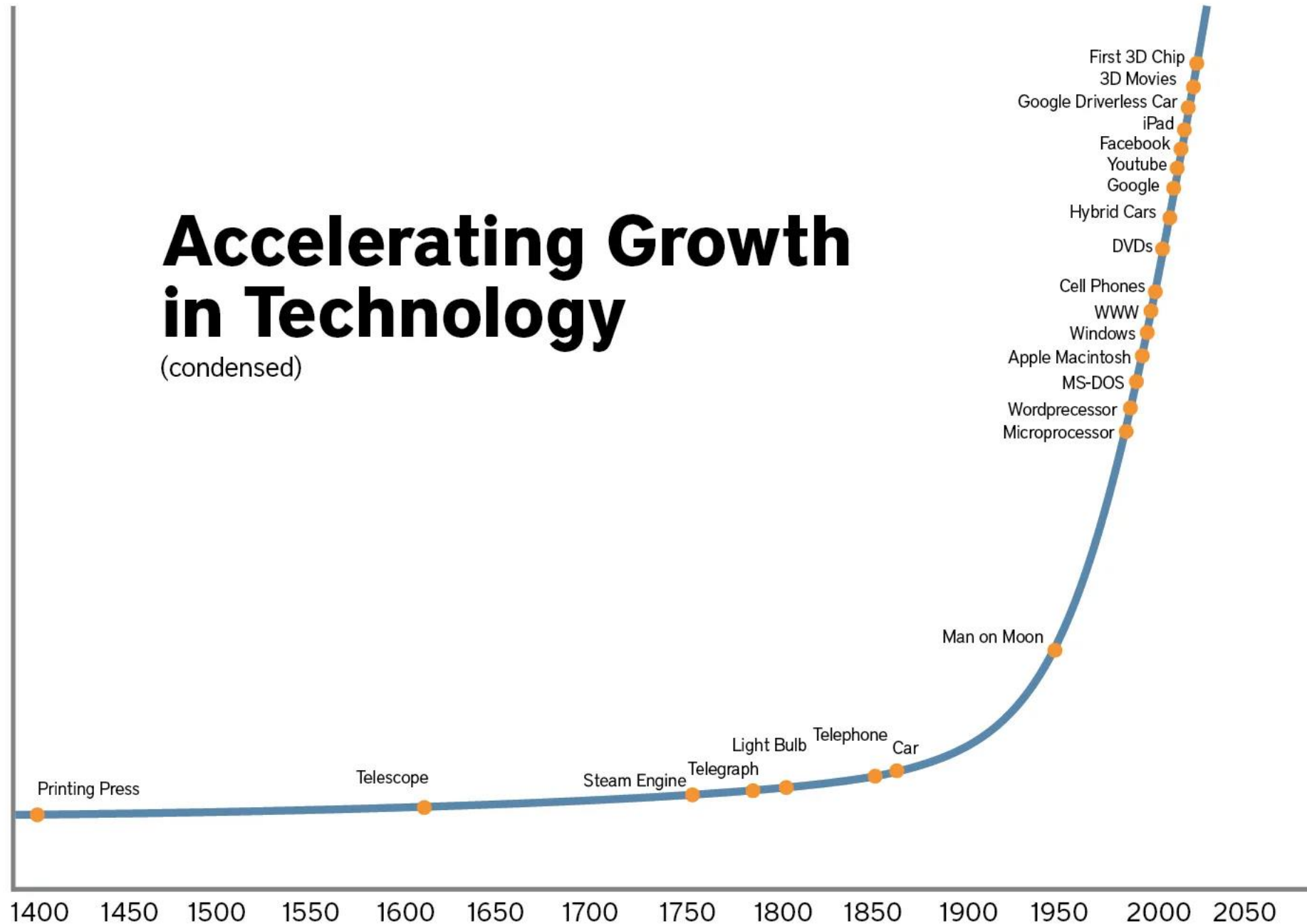






Accelerating Growth in Technology

(condensed)



Robots in 2015



Robots in 2017



Robots in 2018



Robots in 2019 FOR SALE!



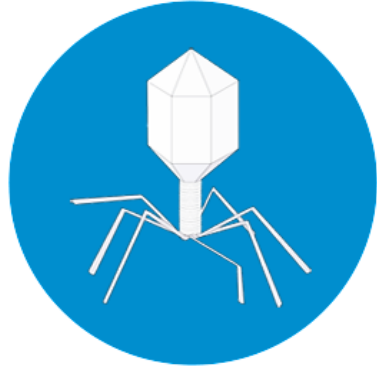


THE WORLD IS **CHANGING**

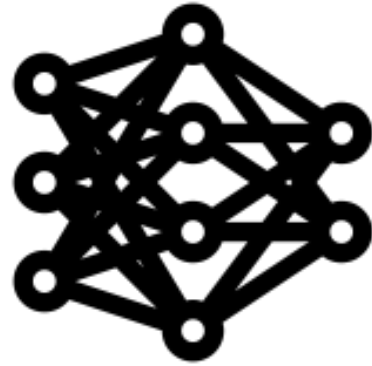
Exponential Technologies



Genetics



Phage
Therapy



Machine
Learning



Fusion



Human
Longevity



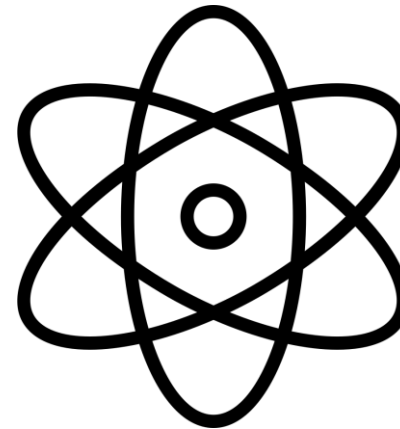
Space



Virtual Reality



BCIs



Quantum



Nanotech

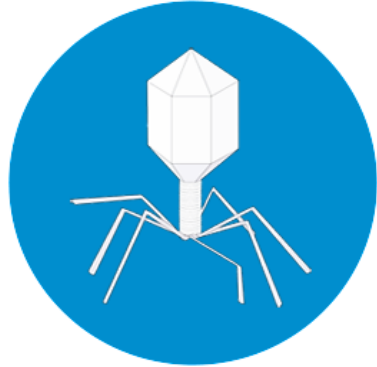




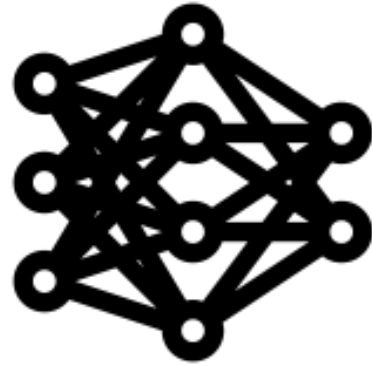
Exponential Technologies



Genetics



Phage
Therapy



Machine
Learning



Fusion



Human
Longevity



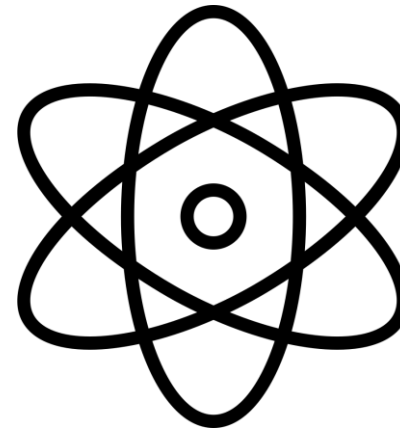
Space



Virtual Reality



BCIs



Quantum



Nanotech







ananyachdh



ananyachadha@hotmail.com