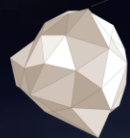




altran

INNOVATION MAKERS



Transport Trends and Challenges Opportunities for Innovation

Mike Greenan

Railway and Infrastructure Director / Altran

APDC 2015

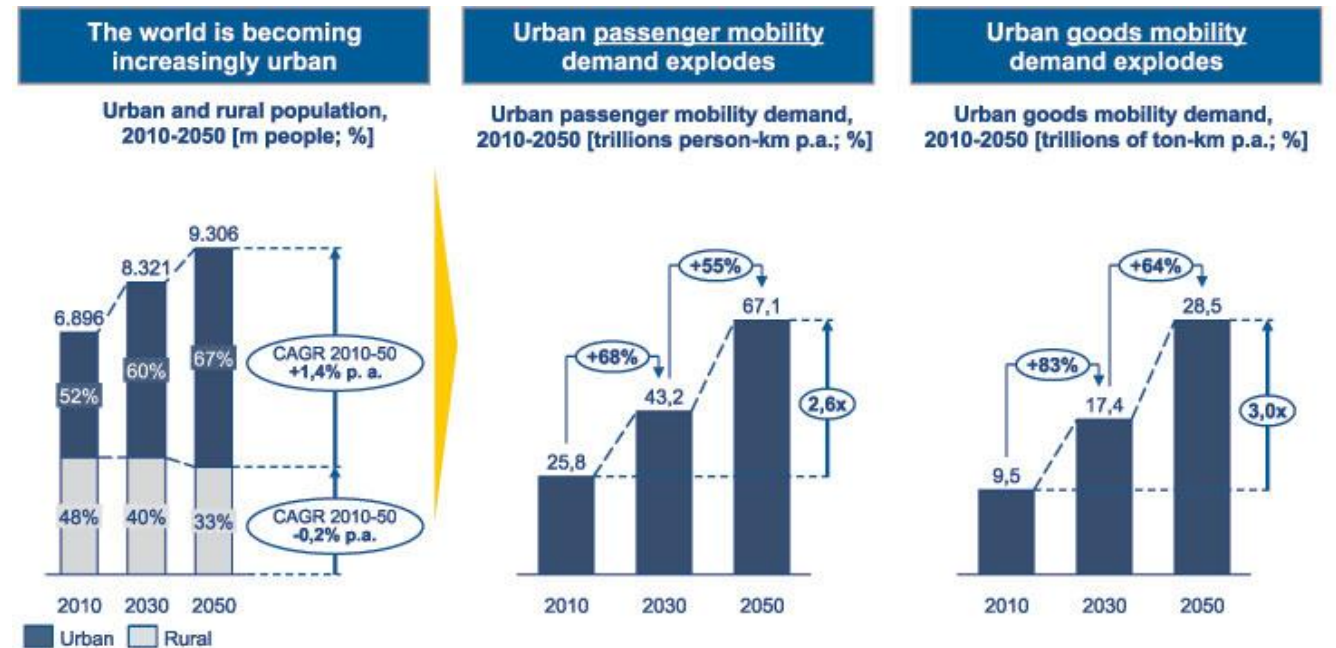
Executive Breakfast – Tendências no sector dos Transportes

Table of Contents

- Transports Industry and Trends
- Data as an innovation opportunity
- Applications

Global Trends

- Global population is increasing
- By 2050, 60% of the world's population will live in cities
- Passenger kilometres is increasing for rail, air and urban solutions

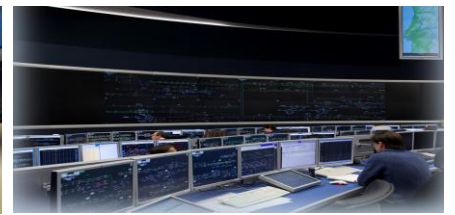


Source: UN, Worldbank, OECD, ITF, Schäfer/ Victor 2000, Cosgrove/ Cargett 2007, Schäfer 2007, Arthur D. Little

There will be more Travellers

Transport Industry's Trends – in Response to Global trends

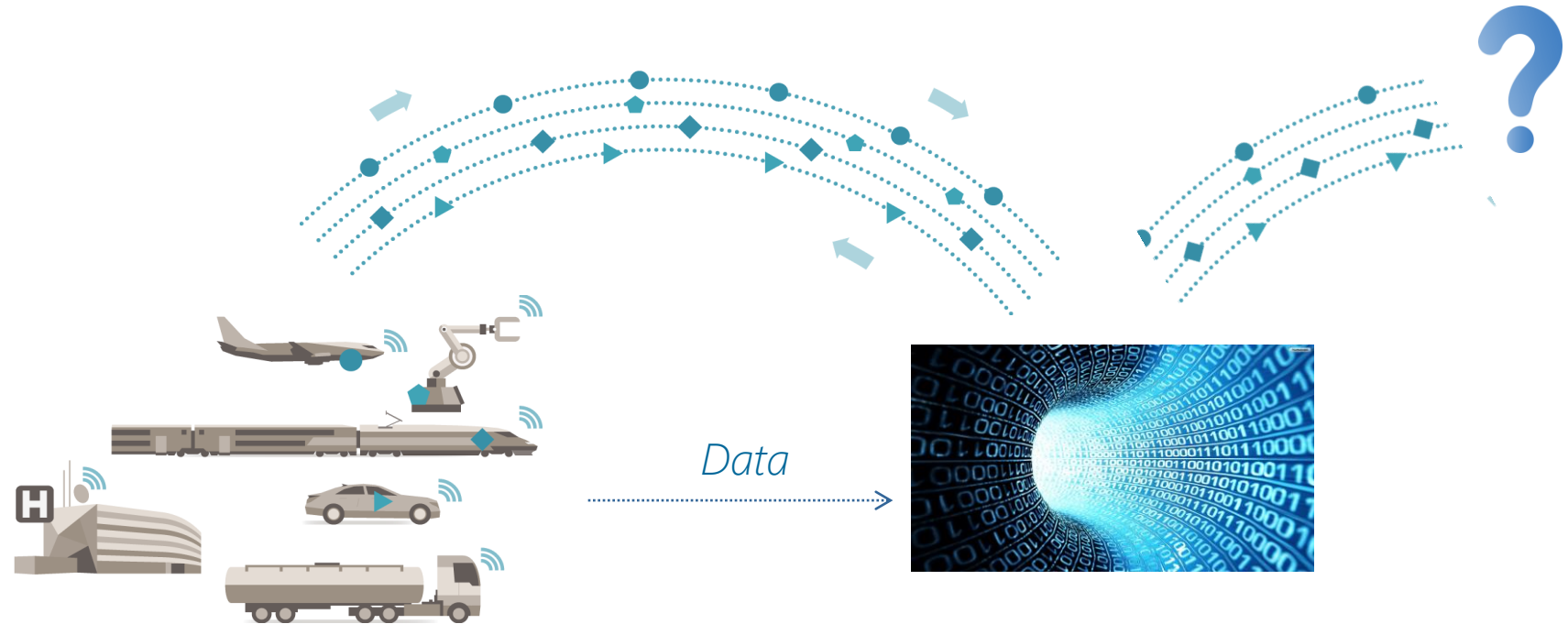
- High speed railway lines are connecting up all the world's big cities
- More frequent metros, trams and buses in cities
- Airlines and flights are increasing
- More airports and runways are coming
- There will always be lots of cars



There will be enough capacity to move all the Travellers

Supplier Trends

- Building more efficient physical 'Assets'
- Providing better connectivity of their 'Assets'
- Providing more data from their 'Assets'



Eventually we will have all the connectivity and all the Asset data we could ever want!

The Challenge – an area for innovation

The Challenge;

- We need to keep our citizens moving
- We need to keep the assets moving

An Opportunity for Innovation;

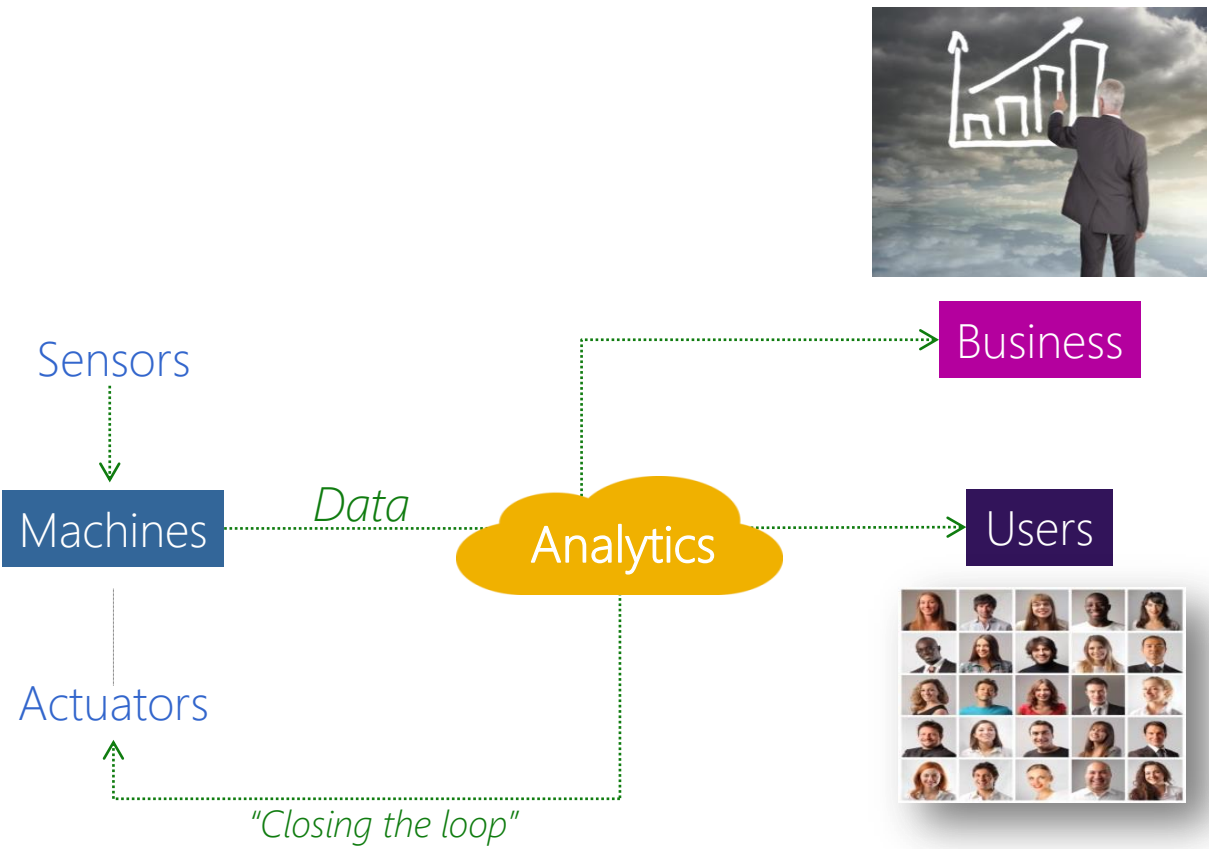
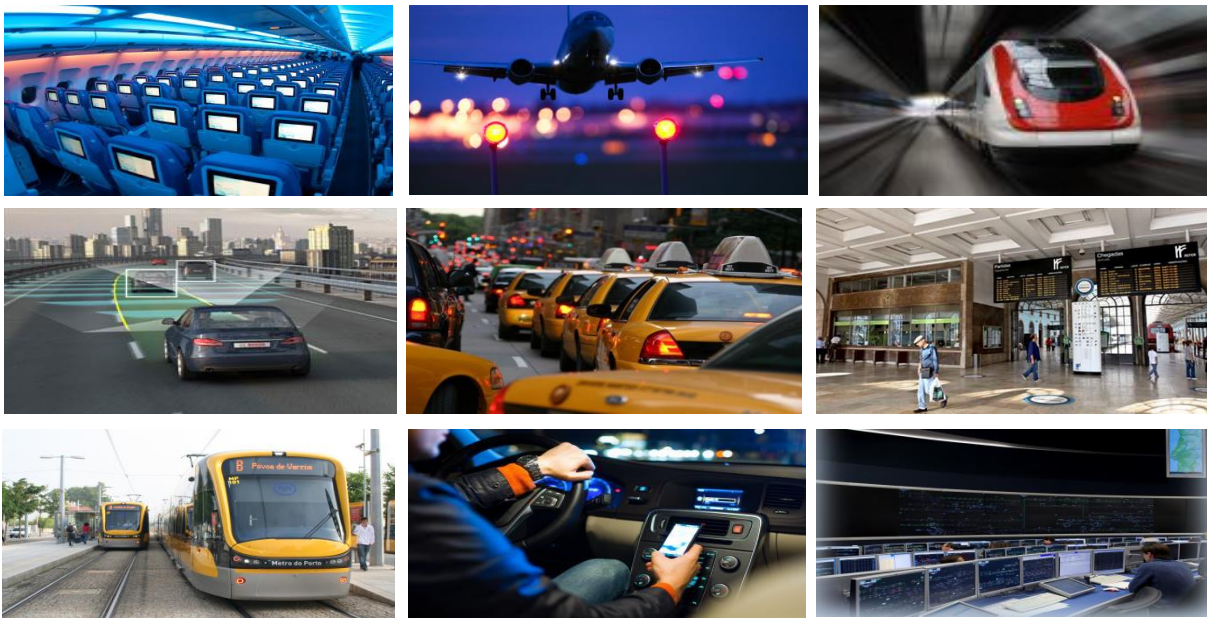
- There will be plenty of data available from the 'assets', and from the passengers mobile devices
- We can take all this data, analyse it and convert it to information that can be then used to help drive an ultra efficient transport system



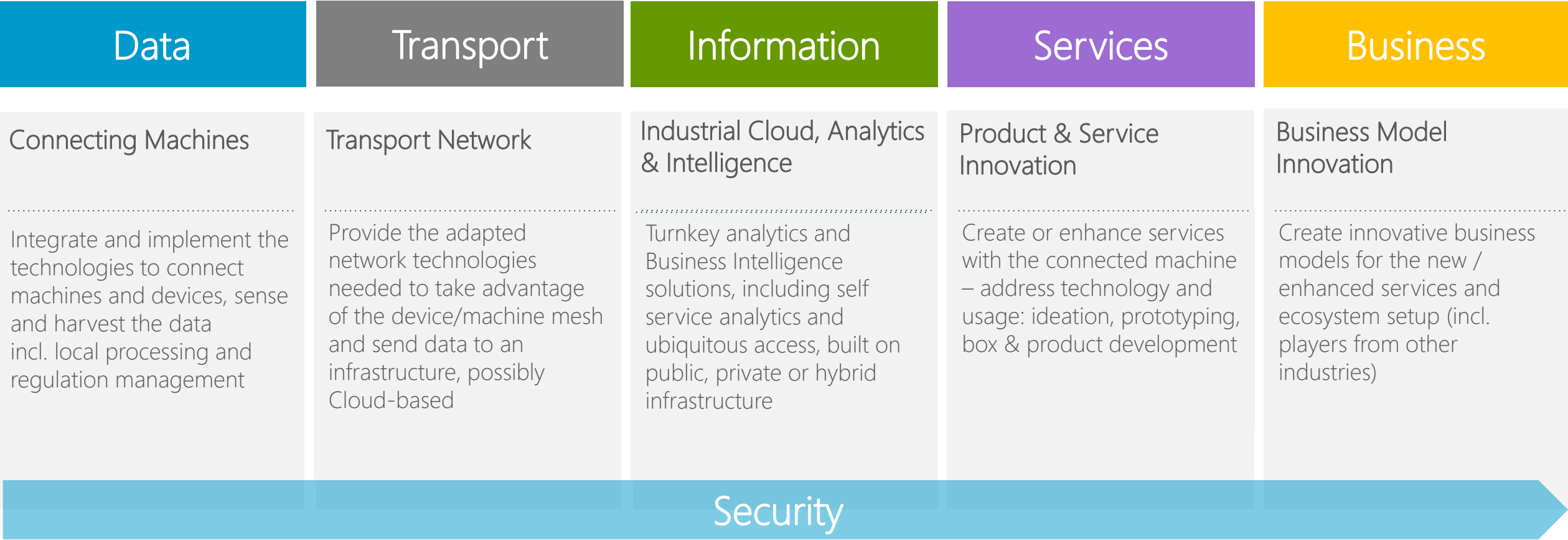
No time for breakdowns! But we can make more use of the data!

Building a Solution

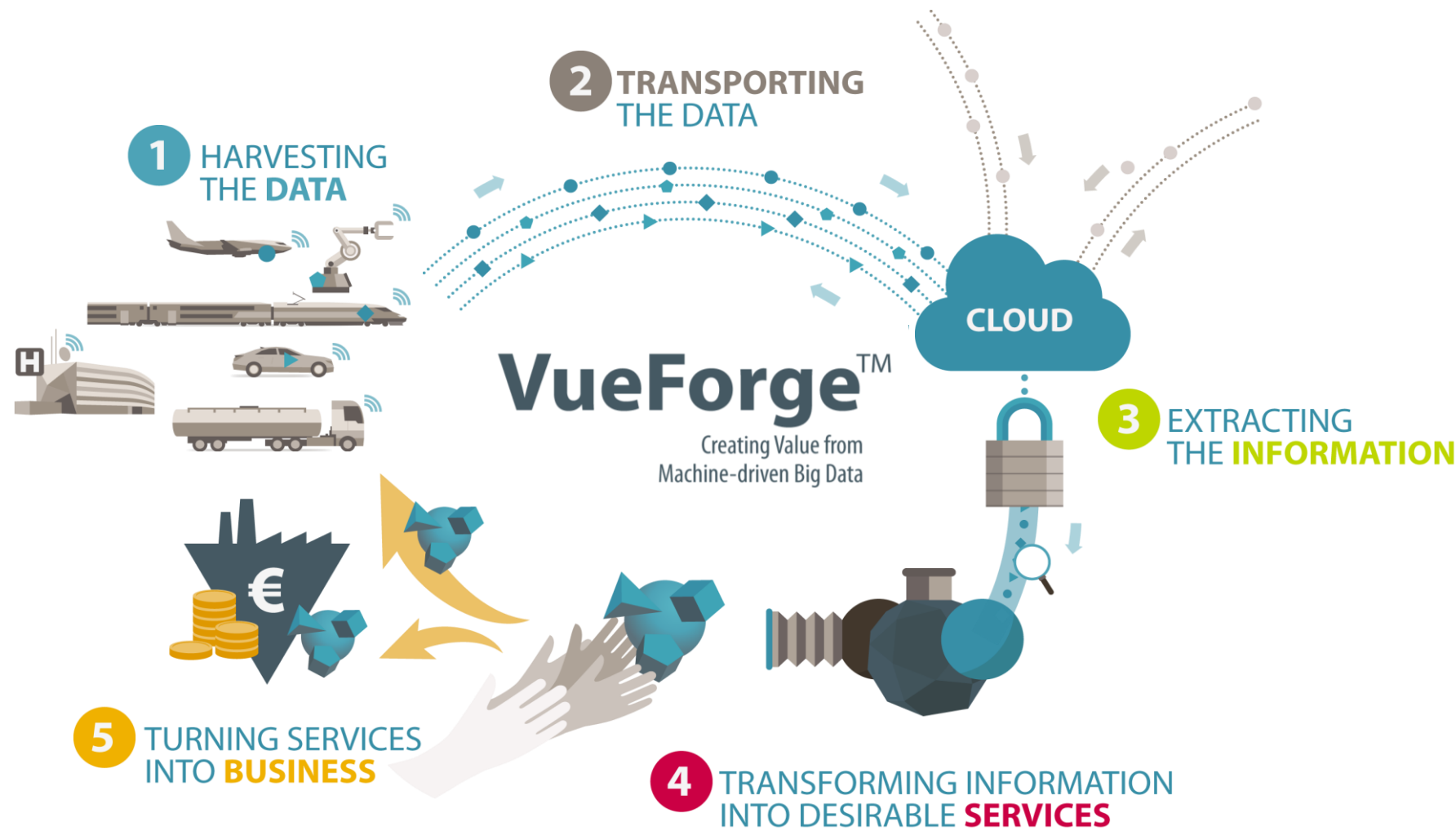
What is Machine-driven Big Data?



Building a Solution



Building a Solution (Video)



Traveller management using VueForge™

VueForge™ Sense

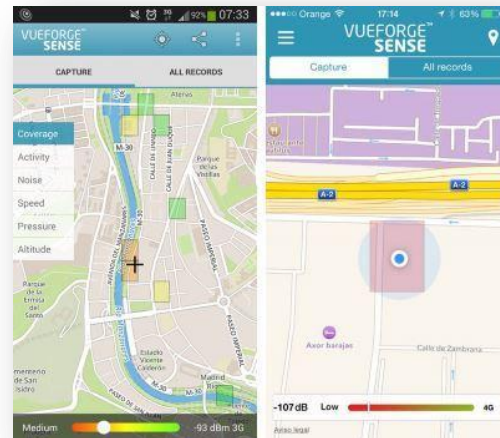
Intelligent Mobile SW to harvest data from Mobile phones. Extremely low-consumption, sensing technology designed to turn smartphones into complex sensors.

Use what (almost) everybody has !



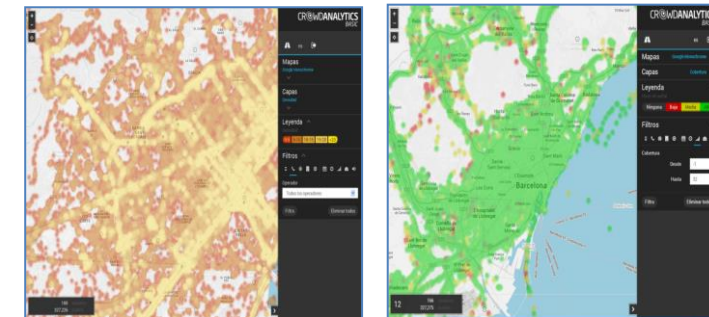
Fire & Forget - 24/7

...to harvest and use data!



VueForge™ Think

Build passenger journey information by data-fusion (data in this case coming from the smartphone data).



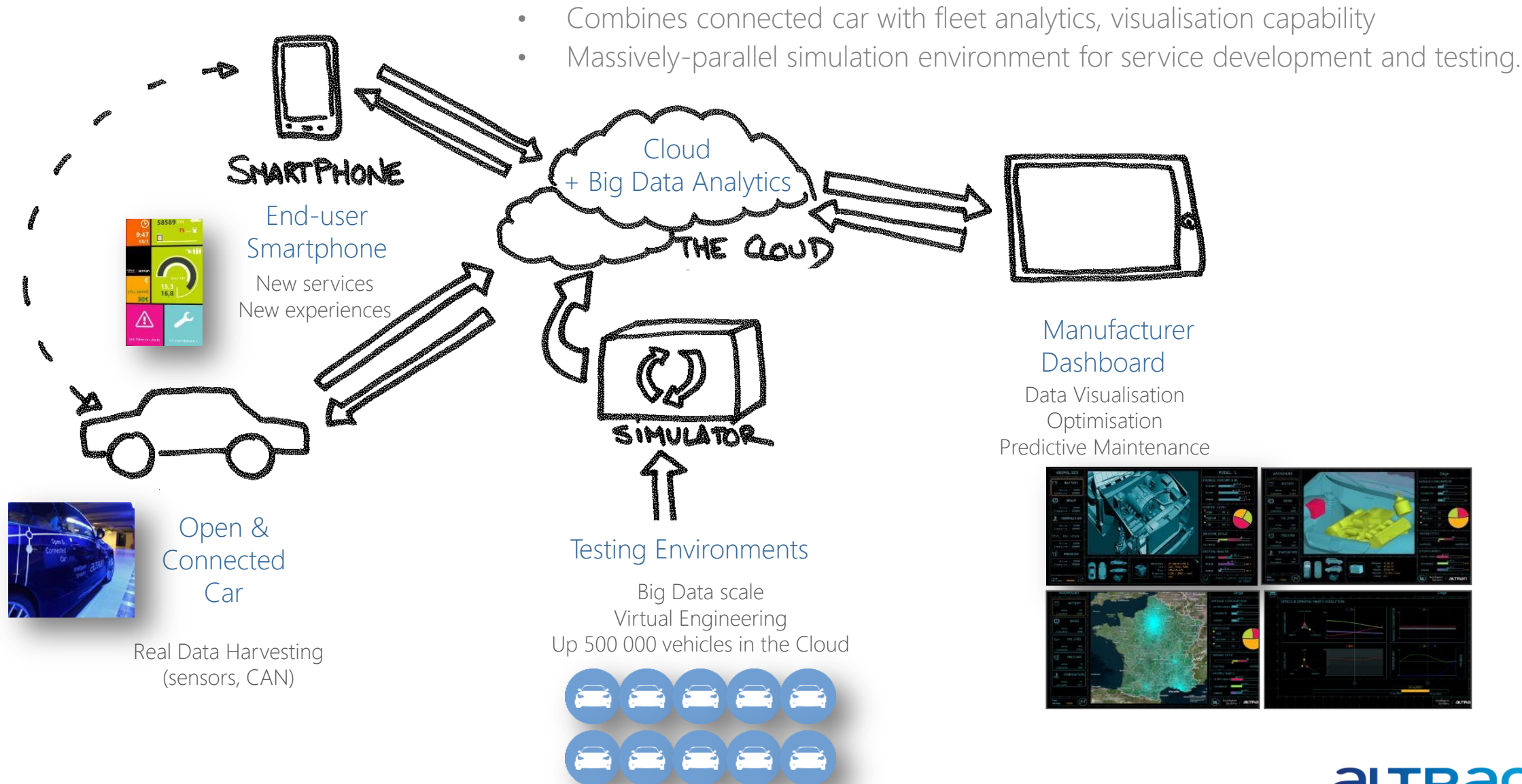
Asset Management

Predictive maintenance

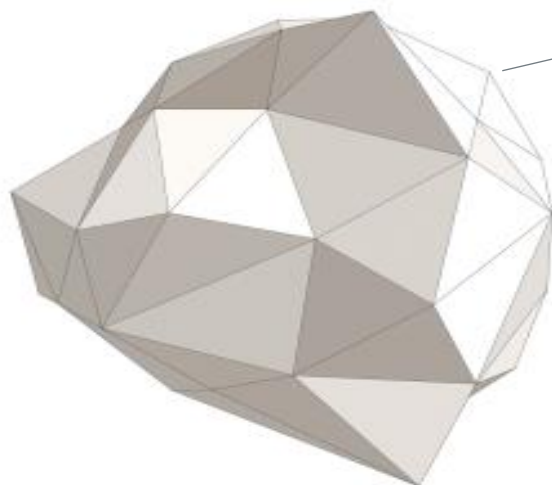
- Projects in several sectors
- Retrieving data from sensors
- Back-end data analytics
- Providing information to drive maintenance plan



Asset Management using VueForge™



Thank you/Questions



INNOVATION MAKERS